



AMERICAN DENKI



The new standard plug for mechanical equipment



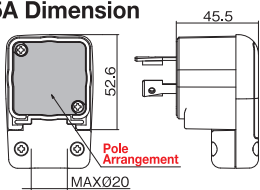
15A rating new release

L-SHAPED PLUG

Introducing a new Locking L-shaped Plug with the cable insertion port facing 90 degrees to the plug blade. The outer housing is made of flame-retardant (UL94 V-0) polycarbonate, an ultra-high strength resin with excellent impact resistance. The body is made of flame-retardant (UL94 V-0) nylon resin with heat resistance and tracking resistance, improving safety and durability. Furthermore, by eliminating protrusions from the screw parts, operability and safety have been improved.

Rating	Pole		Catalog No.	Price (JPN YEN)	Applicable Receptacle	Applicable Waterproof Lift Cover Plate
	Current	Voltage				
15A	2P, 3W GND	125V	NEW 3112EL	1,530	3110	WLP3000
			NEW 3112EL-L5		3110-L5	
		250V	NEW 3122EL-L6		3120	
20A	2P, 3W GND	125V	NEMA L5-20P 3212EL-L5	1,570	3210-L5	WLP3000
			NEMA L6-20P 3222EL-L6		3220-L6	
	3P	250V	3222EL	1,980	3220	WLP4000
			4222EL		4220	
30A	2P, 3W GND	125V	NEMA L5-30P 3312EL-L5	2,290	3310-L5	WLP4000
		250V	NEMA L6-30P 3322EL-L6		3320-L6	
			3322EL		3320	
	3P	250V	3362EL	2,700	3360	
		600V	4322EL		4320	
			4322EL-L15		4320-L15	
	3P, 4W GND	250V	4362EL	3,080	4360	
		600V				

15A Dimension



※ Please check the AMERICAN DENKI website for 20A and 30A rating products.

- Wire Size 2PNC/VCT 2mm², 3.5mm²
- Connectivity Crimping Terminal Push-in-screw Terminal
- Connectivity R2-4, R3.5-4

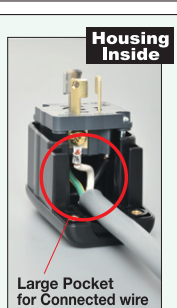
1 Space-saving & Safety Measures

The wires protruding from the plug can be dropped straight down or turned to the side near the wall, reducing the distance between the wall and the machines. This contributes greatly to space saving compared to straight type plugs with wires protruding forward. It also improves safety by preventing people from getting their bodies or parts of machinery caught in the wires.



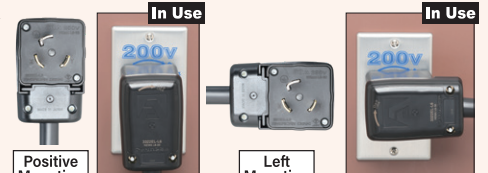
2 The Great Wiring Workability

The size of the main body makes it possible to hold it firmly in your hand while performing wiring work. In addition, the dimensions (strip length) for stripping the sheath when connecting to the terminals are all the same length. In addition, the pocket (space) inside the cover into which the main body is installed after wiring is wide, so the connected wires can be stored inside smoothly.



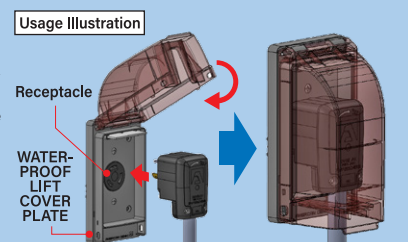
3 The Four Direction Cable Entry

When attaching the main body with wires connected to the housing, you can choose from four directions: top, bottom, left, and right, so it can also be used with outlets whose grounding are facing downwards.



4 Available Waterproof

By using WATERPROOF LIFT COVER PLATE in combination, you can obtain IPX3 (rainproof) waterproof performance even when the L-shaped plug is inserted into the receptacle. Also, since the outlet faces forward, you can easily insert the L-shaped plug while checking the insertion hole.



AMERICAN DENKI website

Drawing, Specification and Test Report PDF downloadable from the website.

<https://en.americandenko.co.jp>



アメリカン電機株式会社
AMERICAN DENKI CO., LTD.